

AT ANY SIGN OF
STROKE

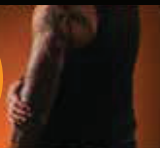
CALL 111

F



FACE
DROOPING
ON ONE SIDE

A



ARM
WEAKNESS
ON ONE SIDE

S



SPEECH
MIXED UP,
SLURRED OR LOST

T



TAKE ACTION
CALL 111
IMMEDIATELY

**AT ANY SIGN, ACT FAST AND
GIVE SOMEONE THE BEST
CHANCE OF RECOVERY**

For more info visit: www.stroke.org.nz/fast